

DOWLING

PROPERTY



24 Delprat Avenue Beresfield NSW

3 1 6

You will be amazed at the opportunity and the convenience of being in arguably one of the Hunter's most central suburb's, which is just 24 minutes to Newcastle CBD, 15 minutes to Greenhill's Shopping Centre and just a 10-minute walk to Beresfield business district and train station.

Land Size : 645 sqm
View : <https://www.dowlingnewcastlehunter.com.au/sale/nsw/hunter-valley-lower/beresfield/residential/house/7708598>

Welcome to 24 Delprat Avenue, Beresfield.

Perfectly positioned and set to ignite the imagination, this vibrant & light filled R2 Zoned, hardi-plank and iron 3-bedroom home is set on a 645sqm level block of which you will instantly be impressed with the practicality of the floorplan, the generous living spaces, the open plan layout and a seamless flow of indoor living meets outdoor entertaining.

Features Include:



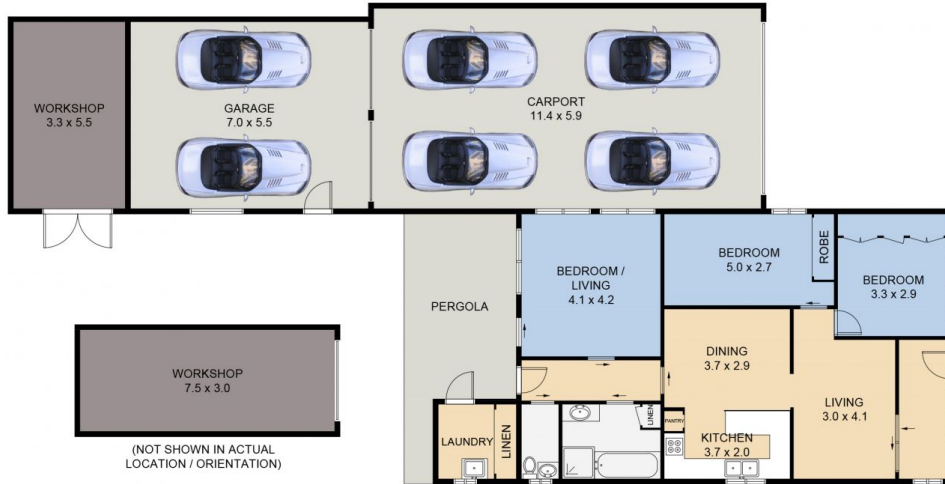
Rob McCorriston
0406121166

<https://www.dowlingnewcastlehunter.com.au>

SITE PLAN
(Not to Scale)



DELPRAT AVENUE BERESFIELD



24 DELPRAT AVENUE BERESFIELD

DISCLAIMER: FLOOR PLAN MEASUREMENTS ARE APPROXIMATE AND ARE FOR ILLUSTRATIVE PURPOSES ONLY. YOU SHOULD CONDUCT A CAREFUL INDEPENDENT INVESTIGATION OF THE PROPERTY TO DETERMINE SUITABILITY FOR YOUR SPACE REQUIREMENTS.